

# Professional Office Space 3711 Joseph Howe Drive

service·trust·value

Charlottetown | Halifax | Toronto

lease | manage | market

## For Lease

Professional Office Space

BROKERS PROTECTED

3711 Joseph Howe Drive  
Halifax, NS

For more information, contact:

**Brian Gillis**  
V.P. Business Development  
T 902.569.8400  
bgillis@APM.ca

**Heather Joudrie**  
General Manager  
T 902.569.8400  
hjoudrie@APM.ca

**Philip MacDonald**  
Development Agent  
T 902.569.8400  
pmacdonald@APM.ca

APM  
3 Lower Malpeque Road  
Charlottetown, PE C1E 1R4  
T 902.569.8400  
F 902.569.1149

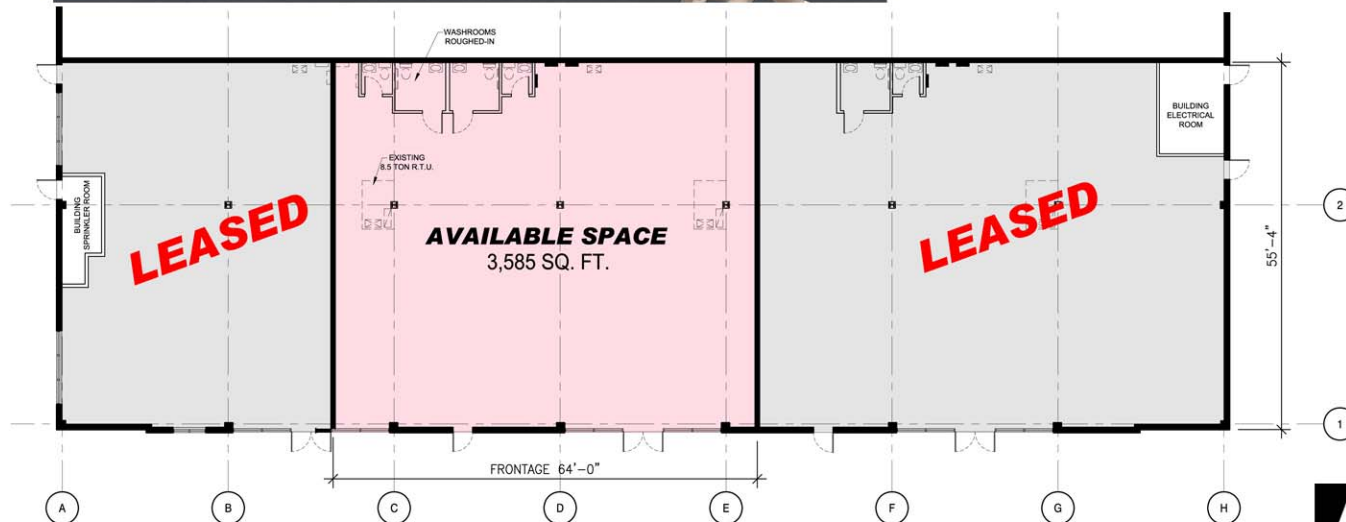
APM.ca

The time to move your business to Joseph Howe Drive in Halifax, NS is now. One spacious unit left in this new building on one of the busiest streets in Halifax. This new building is home to Loblaw's regional offices and offers tremendous lease opportunities.



### Property Highlights:

- 3,585 sq.ft. Available
- Anchored by:  
Loblaw administrative offices
- Adjacent to Atlantic Superstore
- Located in a popular area of Halifax
- 80 on site parking spaces



© 2008, APM. The information above has been obtained from sources we believe to be reliable and may not represent current or future performance of the property. It is submitted to the possibility of errors, change of price, rental or other conditions, prior to sale, lease or financing of said property. This information and all copyright therein are the sole property of APM. Reproduction or use of this information in any means without the prior written consent of APM, is strictly forbidden.



# Professional Office Space 3711 Joseph Howe Drive

service·trust·value

Charlottetown | Halifax | Toronto

lease | manage | market

## For Lease

Professional Office Space

3711 Joseph Howe Drive  
Halifax, NS

For more information, contact:

### Brian Gillis

V.P. Business Development  
T 902.569.8400  
bgillis@APM.ca

### Heather Joudrie

General Manager  
T 902.569.8400  
hjoudrie@APM.ca

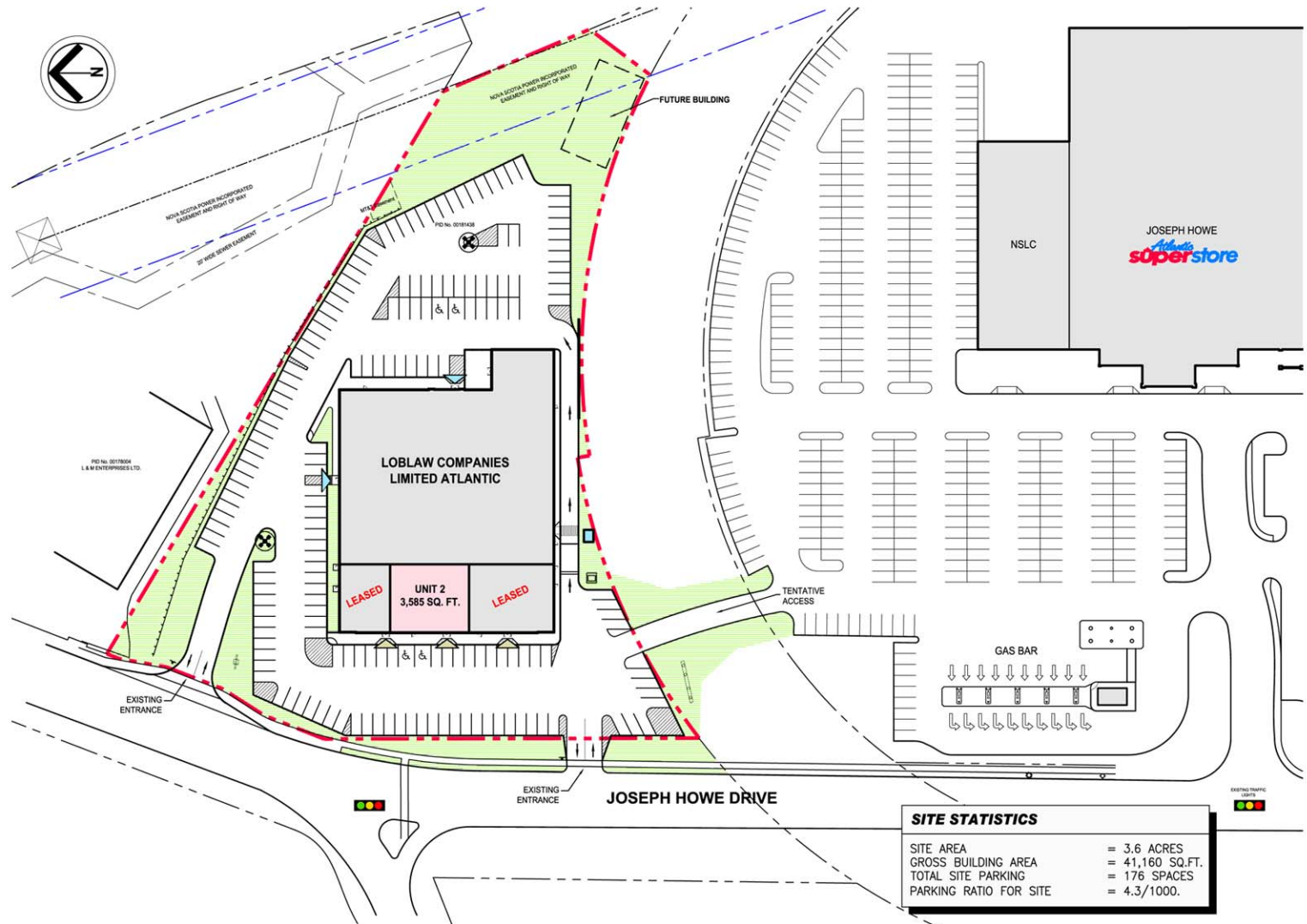
### Philip MacDonald

Development Agent  
T 902.569.8400  
pmacdonald@APM.ca

APM

3 Lower Malpeque Road  
Charlottetown, PE C1E 1R4  
T 902.569.8400  
F 902.569.1149

APM.ca



© 2008, APM. The information above has been obtained from sources we believe to be reliable and may not represent current or future performance of the property. It is submitted to the possibility of errors, change of price, rental or other conditions, prior to sale, lease or financing of said property. This information and all copyright therein are the sole property of APM. Reproduction or use of this information in any means without the prior written consent of APM, is strictly forbidden.

